

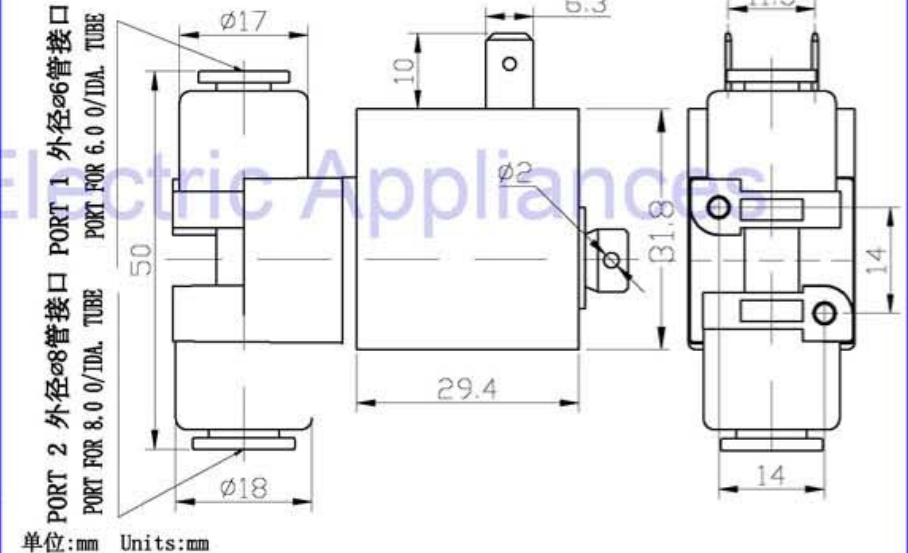
## ZHV-0829L Solenoid Valve

ISO/TS16949 ISO9000 ISO14000  
RoHS REACH CE UL VDE TÜV

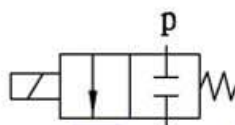


总重量 Total Weight: 89g  
应用范围: 自动取款机  
APPLICATION: ATM

类型: 二位二通 TYPE: Two position two way



常闭型/NC



### 综合特性 GENERAL FEATURES

- 常用压力: 0~750mmHg/0~1Bar  
Pressure: 0~750mmHg/0~1Bar
- 最小通径:  $\phi 2.9$ mm  
Min Orifice:  $\phi 2.9$ mm
- 流体介质: 空气  
Fluid medium: Air
- 寿命: 典型值为100万次 (on 1s, off 1s)  
Lify cycle: 1,000,000 cycles (on 1s, off 1s)
- 绝缘等级: B类  
Insulation class: class B

### COIL DATA线圈资料

工作周期(%) = $\frac{\text{工作时间}}{\text{工作时间} + \text{断开时间}} \times 100\%$ Duty cycle(%) = $\frac{\text{"ON" time}}{\text{"ON" time} + \text{"OFF" time}} \times 100\%$	连续 Continuous 100%	间断 Or less 50%	间断 Or less 25%	间断 Or less 10%		
最大工作时间(秒) MAX. "on" time in seconds	$\infty$	55	19	3		
瓦特(W) (20°C) Watts at 20°C	2.4	4.8	9.6	24		
安匝数AT (20°C) Ampere-turns at 20°C	332	470	664	1051		
型号 Type no.	阻值(20°C) Resistance ( $\Omega$ ) $\pm 10\%$	线圈匝数 No. Turns	电压(VDC) Voltage DC			
ZHV-0829L-XX A XX	15	830	6	8.5	12	19
No symbol L S 三通 Three Way 常闭 NC 常开 NO	60	1620	12	17	24	38
电压 Voltage (V)	240	3175	24	34	48	76
系列号 Serial No.: A, B, C...	960	6390	48	68	96	152
电阻 Resistance ( $\Omega$ )						